



# Akosoft 36<sup>TM</sup>

Q1 2025

**AAK**

The Co-Development Company

# Content

- 1 Introduction
- 2 Behavior vs shea butter and petrolatum
- 3 Recommended applications
- 4 Formulation



# Introduction

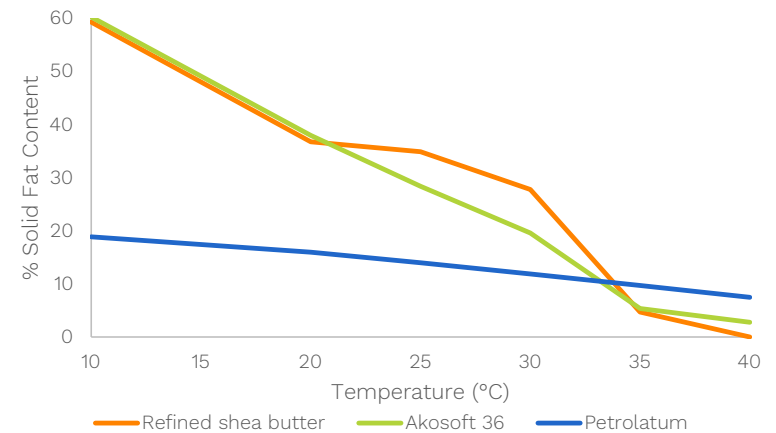
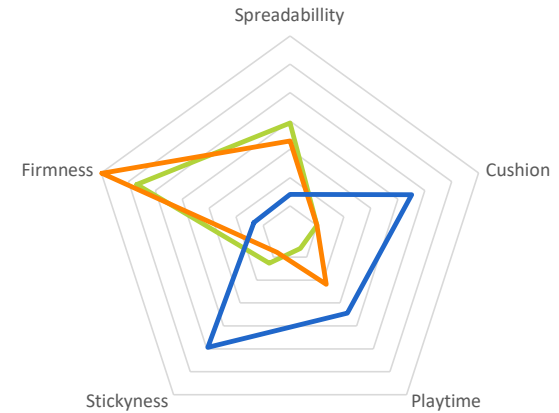
- **INCI:** Hydrogenated cocoglycerides
- **Appearance:** off-white solid emollient, neutral odour
- **Composition:** 100% plant-based, rich in traceable coconut
- **Very good oxidative stability:**  
OSI 110°C >100 hours



## Akosoft 36 is Closer to a Refined Shea Butter than to Petrolatum

- It is **solid and firm in the jar**, and has a **good crystallization** profile, which helps gives consistency and provide structure to formulations.
- It crystallizes straight into the stable crystal form, supporting the creation of stable structures.
- Compared to traditional butters, it has a **sharper melting profile in the 20–30°C range**, which translates into Akosoft 36 melting faster during application on skin.
- It also absorbs fast in the skin, contributing to the overall fast transition from solid to dry.
- During application it shows mid-spreadability, low cushion, low stickiness and short play time, due to its very fast absorbency. On the skin it feels light and leaves a light , non-greasy, powdery afterfeel.

We don't see a reason to call it texturizing oleogel or refer to it as a replacer of petrolatum – as overall its behaviour is more similar to a butter →  
Repositioning to semi-solid butters





## Applications where we see Akosoft 36 would be a good fit

### Haircare

- Good fit due to being coconut based (has not been tested).



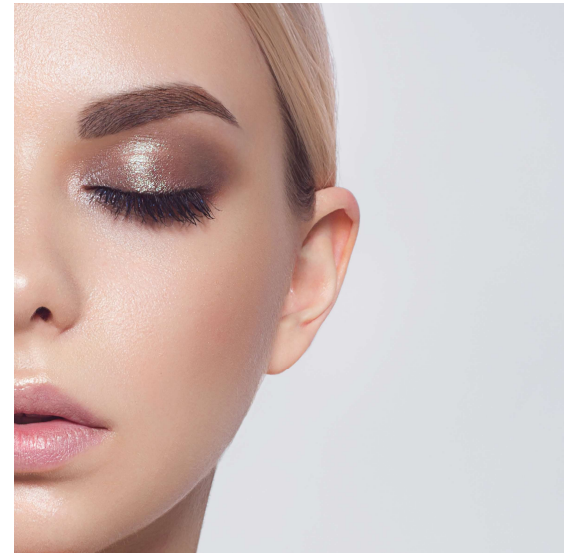
### Skincare

- Face cream – day cream or eye cream where you want consistency in the jar but then dry after feel / light
- Deodorant sticks to support with the structure but then provide a dry after feel – natural deodorant sticks they often contain coconut.



### Colour cosmetics

- Cream eye shadows: you need something that binds the formulation, but it needs to feel powdery





## Bronze Bombshell Creamy Eyeshadow

### Description:

- Dial up the drama in an instant with this luxurious creamy bronze eyeshadow, crafted with sustainably sourced plant-based ingredients to deliver a uniquely hydrating, lightweight texture. From a soft molten-metal sheen to an intensely pigmented color drench, you can easily customize the effect to suit any occasion or mood. Effortlessly glamorous and endlessly versatile – it's your new go-to for brilliant, beautiful eyes.

### Directions of use:

- Apply sparingly across the lids using your fingertips and build up the color as desired. For added definition, use a liner brush to outline the top and bottom lash lines.

Naturality origin index: 99%

# Bronze Bombshell Creamy Eyeshadow

Raw material	INCI Name	w/w %
Phase A		
Akofine R™	Hydrogenated Vegetable Oil	10.00
Akosoft 36	Hydrogenated Cocoglycerides,	34.00
EstoGel Green	Hydrogenated Castor Oil,/Sebasic Acid Copolymer	1.00
LIPEX® SheaLuxe TR™	Ethyl Oleate, Ethyl Sterate	11.50
LIPEX® SheaSolve TR™	Shea Butter Ethyl Esters	11.00
Phase B		
Farmal MS 6135	Calcium Starch Octenylsuccinate	19.00
Phase C		
Cosmi 11412 Oak Brown	Synthetic Fluorophlogopite, Mica, Iron Oxide Black (CI 7499)m Iron Oxide (CI 77491)	10.50
Cosmi 508 Ruby	Mica, Iron Oxide (CI 77491)	1.00
Phase D		
LIPEX® PreAct™	Canola Oil	3.00



- **Akosoft 36™**: this eco-friendly, oxidative stable moisturizing emollient delivers the creamy melting texture and luxurious, lightweight afterfeel.
- **LIPEX® SheaLuxe TR™**: This climate-compensated, fully traceable shea-derived emollient ester delivers a silicone-like glide and non-greasy texture.
- **LIPEX® SheaSolve™**: Our eco-designed emollient ester ensures good dispersion of the pigments and glitter particles and contributes to the lightweight feel.
- **Akofine R™**: This rapeseed-based triglyceride with a high melting point and good oxidative stability is used to structure the formulation.
- **LIPEX® PreAct™**: Our canola-based bioactive emollient is rich in antioxidant tocopherols and anti-inflammatory phytosterols, making it the perfect choice for formulations targeting the delicate eye area.



Thank you!

**AAK**